

# Welcome to glofamilies directory

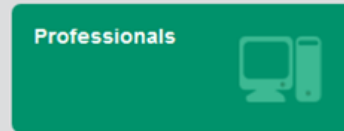
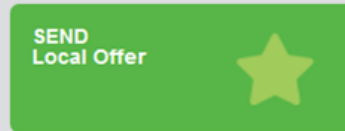
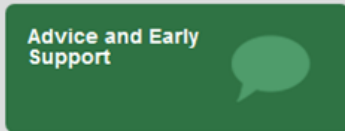
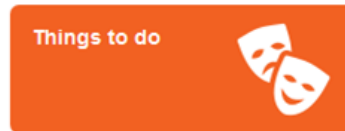
Supported by the Families Information Service  
0800 542 02 02



Keyword(s)

Location OR Postcode

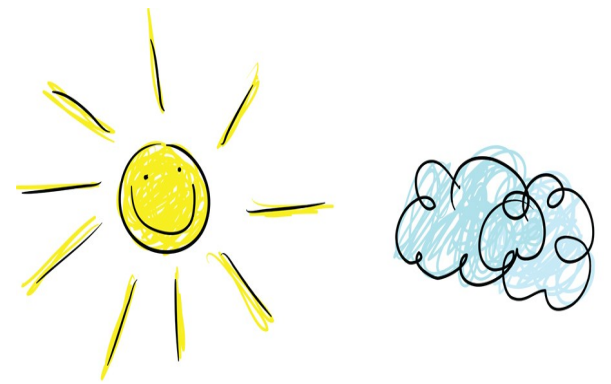
Search



**SEND Local Offer** will include information about health and social care services, education, leisure activities and support groups in the area for children and young people aged 0 - 25 with SEND and their families.



**Early Help** will include guidance on a whole range of issues including food fads, self harm, bullying and safety.



# Family

## Information Service





# Family Information Service

Free, impartial information, advice and support  
for families with children aged 0—19 years  
(0-25 years with additional needs)

**0800 542 02 02**

Money Matters  
including  
Benefits

How to find  
Childcare

Changing or  
starting school

**Would you  
like to know  
about....**

Local activities  
& things to do  
after school or in the  
holidays

Support for  
children & young people  
with additional needs

Free childcare for 2  
3 & 4 year olds

[familyinfo@gloucestershire.gov.uk](mailto:familyinfo@gloucestershire.gov.uk)

**If you don't know who  
to ask....ask us!**

## Family Information Service

Shire Hall  
Westgate Street  
Gloucester GL1 2TG

**Telephone:** 0800 542 02 02  
(Mon – Fri 9am to 5pm.  
Answer machine at all other times)

**Direct line:** 01452 427362

**Email:** [familyinfo@gloucestershire.gov.uk](mailto:familyinfo@gloucestershire.gov.uk)



Family Information Service-Gloucestershire



@GlosFIS

See details of our Directory overleaf:

**glosfamilies directory**

[www.glosfamiliesdirectory.org.uk](http://www.glosfamiliesdirectory.org.uk)